

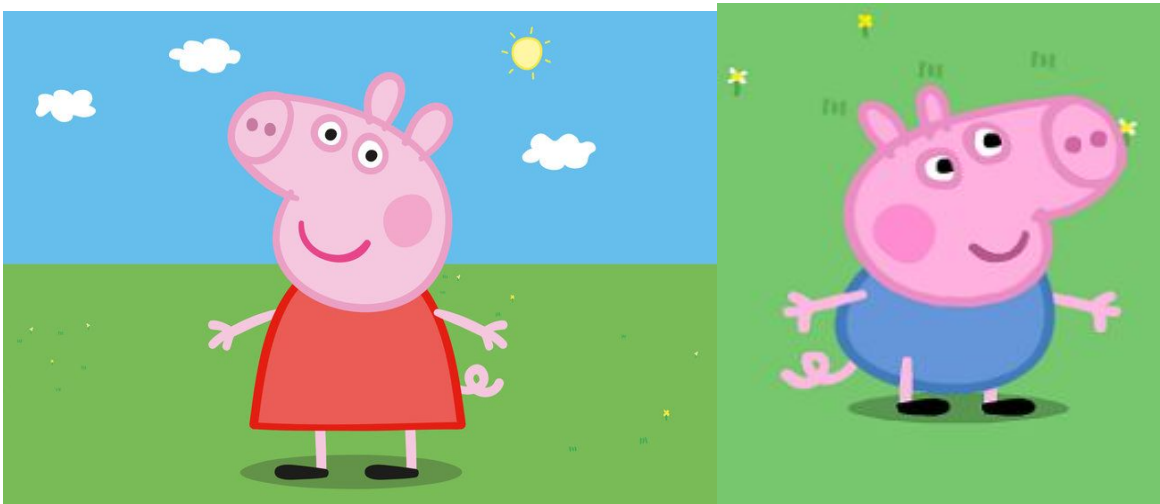
Peppa Pig and George

From the show “Peppa Pig”

By: Lydia L.

For this assignment, I chose to compare Peppa Pig and George from the show “Peppa Pig”. I’m going to compare their appearance, personality, actions, motives, and their friends.

Peppa and George are a part of a family of pigs. They both belong in the same family. They both are really great siblings. They always like to laugh and jump in mud together!



APPEARANCE:

Peppa and George’s appearance is similar and different in many ways. Some similar things about them is that they both have big snouts and pink cheeks. They also have a curly tail at the end of their body’s. They both also have black shoes and they both have two ears at the top of their head. Some differences they have is that George has a blue

shirt while Peppa has a red shirt. George is also shorter than Peppa and also has shorter feet.

PERSONALITY:

Peppa and George's personalities are similar and different in many ways. Some ways they are similar is that they are both silly and love to play. Their favorite thing to do is to jump around in muddy puddles. They both are kind and respectful during school times and around their mom's and dad's. Some ways they are different is that George likes to cry more often than Peppa. But whenever Peppa hurts George's feelings, she always apologizes.

ACTIONS AND MOTIVES:

Peppa is a very thoughtful and kind person. George is also kind, but he is too little to understand. One way that Peppa is thoughtful is that when her friend broke his leg, Peppa cared for him and often visited him in the hospital. George is also kind but doesn't really show it. He is respectful and helpful to his friends at all times. Both pigs are kind and respectful, they even care for the ducks that they see when they go on a picnic. They often have friends visit them and is always kind around them.

Friends:

Some of Peppa's friends are Suzy the sheep, Zoey the zebra, and Rebecca the Rabbit. Some of George's friends are some of Peppa's friends little siblings. Peppa's friends are slightly older than George's friends. George and his friends like to play with toys and show off their dinosaurs. Peppa and her friends like to have tea parties most of the time in their treehouse. Peppa and George most of the time spend time with their friends.

CONCLUSION:

Peppa and George are great siblings of each other and go on many adventures together. I hope that this writing taught you something about Peppa and George.